

# Configuration



Card reader +  
Card Authentication Kit (B)



Data Security Kit (E)\*



UG-33 ThinPrint



Cabinet  
no. 79 (high)



CA-3100 Caster Kit



Cabinet  
no. 80 (low)

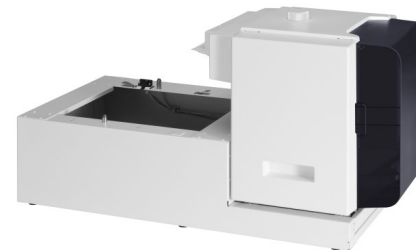


PF-3110  
(max 4 x 500 sheet)

System incl. 500  
sheet universal  
cassette



PT-320  
Output tray 250 sheet  
(not applicable to P-4532DN)



PF-3100 (2,000 sheet) +  
PB-325 attachment kit



IB-32  
IEEE 1284 Parallel  
Interface



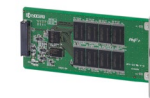
IB-50  
Gigabit Ethernet



IB-36  
WLAN card



IB-51  
WLAN card



HD-6  
SSD (32 GB)



HD-7  
SSD (128 GB)

IF IT WORX, IT'S



Product Scout P-4532DN/5032DN/5532DN/6033DN, TA HQ PMD

\*activation FOC if HD-6 or HD-7 is installed