



Lab Test Report

A Comprehensive Keypoint Intelligence Laboratory Evaluation

UTAX 5007ci

50 PPM Monochrome/ 50 ppm Colour | Print • Copy • Scan • Fax



● Reliability	10.0
● Apps/Onboard Tools	Not Rated
● Image Quality	8.0
Print Quality	8.5
Copy Quality	7.0
● Usability	8.0
Serviceability/Management	7.5
Walk-up Experience	8.0
Workstation Experience	8.5
● Mobility	Not Rated
● Security	9.0
● Specifications	8.0
● Speed	6.5
Print Speed	6.5
Scan Speed	8.5
Copy Speed	6.0
● Power Consumption	Not Rated



OUR TAKE

The UTAX 5007ci performed extremely well in Buyers Lab's extensive lab test evaluation, proving to be a highly reliable product and a strong choice overall. The device experienced only one misfeed over the course of its 225,000-impression durability assessment. When also taking into consideration its extremely high rated yields for drums and developer, downtime will rarely if even be an issue. Print and copy quality was very effective too. The device's control panel lacks the slide/swipe navigation seen more and more frequently among competing devices, as well as simple scan and copy menus to simplify selection of commonly-used functions. In addition, the scan and copy previews are somewhat limited compared to some of its peers. Still, usability was found to be very good overall. The control panel was intuitive and easy to navigate overall, and also supports user-by-user customization, shortcut keys, and up to 50 job programs to streamline workflows. The 5007ci is also JAWS-enabled, allowing for seamless integration of customized workflow solutions to streamline complex tasks, reduce costs, and enhance security. Standard WiFi-Direct and NFC and support for Apple AirPrint®, Google Cloud Print®, and Mobile Print® let users quickly and easily print from mobile devices. A robust feature set solidifies the unit's outstanding value. A large QWERTY keypad and fast scan speeds make programming and delivery of scan destinations easy and fast. Tested print and copy speeds were good overall. First-print and first-copy times were fast. Short-and long-run print jobs were slower than average in colour, however. Based on its performance, Buyers Lab would highly recommend the UTAX 5007ci for midsize to larger workgroups.

UTAX 5007ci Fast Facts*

SRP/Street Price	INA
Max Monthly Duty Cycle	225,000 impressions
Manufacturer's Recommended Monthly Volume	Info not avail
Rated Speed	50 ppm colour/50 ppm black
Std Paper Source(s)	Dual drawer
Std Paper Capacity	1,000 sheets
Paper Weights	52 to 300 gsm
Bypass/Paper Weights	150-sheet/52 to 300 gsm
Max Paper Capacity	7,150 sheets
System Memory (Std/Max)	4-GB RAM/8-GB RAM
Document Feeder/ Capacity	Opt RADF/ DSPF/ DSPF/140/270/270 originals
PDL/PCL	PCL 5/6, PostScript 3, XPS
HDD (Std/Max)	320 GB
Scanner Technology/Speed	CCD/80 ipm colour, 80 ipm black; 100 ipm colour, 100 ipm black; 120 ipm colour, 120 ipm black
* At time of publication	

Test Duration: Two months, including a 225,000-impression and 22,500-scan durability test.

The gauges above represent Excellent (9-10), Very Good (7-8.5), Good (4-6.5), Fair (1.5-3.5) and Poor (0-1).

Please visit buyerslab.com/bliQ for more information.

BENEFITS

- Maximize uptime thanks to outstanding reliability and very high yields for components such as drum and developer
- High quality output that meets the needs of general office environments and more marketing-intensive environments
- Easy to use web user interface, detailed feedback, and ease of misfeed removal simplify administrator and service tasks
- Ensure unique settings are one click away via the driver's Quick Print tab, which enables users to create and save custom profiles as graphical icons
- Streamline scan and copy workflows with user by user control panel customization, shortcut keys, and up to 50 job programs
- Print from anywhere with mobile printing support for both Android and Apple devices
- Take advantage of UTAX's JAWS Platform to connect to specialized and embedded applications
- Conveniently switch between PCL and PostScript for different job types from within the KX driver

ADVANTAGES

- Higher-than-average standard memory allows for faster processing of jobs
- Heavy paper weight support increases media flexibility
- Above average maximum paper capacity means less time spent having to refill paper
- Fast first-print times among peers
- Scan speeds were the fastest or among the fastest tested to date among peers
- Fast first-copy times among peers

LIMITATIONS

- No support for alternate simple scan or copy menus
- Scan and copy previews do not support page deletion or onscreen editing
- Unable to store extensions nor save domains as one-touch keys to the scan display
- Only quantity can be modified for jobs in queue
- No digital signature for job tracking; no support for MAC filtering for security
- Below average hard drive capacity
- Short- and long-run print jobs ran slower than average in colour

RELIABILITY

10

- The UTAX 5007ci experienced just one minor misfeed over the course of its 225,000-impression test.
- The rated colour and black drum yields of the 5007ci are higher than the average of competitive systems, reducing the amount of scheduled maintenance calls when compared to competitors.
- The black toner bottle can be reused as a waste toner bottle. Simply remove the black toner bottle when it is empty, rotate the bottle, and insert the bottle into the waste toner slot.

Impressions Printed	225,000 impressions
Scanned Pages	22,500 scans
Misfeeds	1
Misfeed Rate	1/225,000
Service Calls	0

APPS/ONBOARD TOOLS

Not Rated

- UTAX's JAWS Platform offers both Java-based and Web Services-based software development kits. According to the manufacturer, this approach provides a more open and flexible developer environment, which enables integration with systems that are already implemented in a customer's enterprise. DocuWare Connector serves as a bi-directional bridge between JAWS-enabled and capable MFPs, and DocuWare on-premises and cloud-based enterprise content management systems.
- AccuSender, powered by Biscom, allows users to scan and send documents quickly to and from their UTAX MFP using Biscom Secure File Transfer, email, or fax. The manufacturer notes that the solution is well-suited for organizations operating in the legal, financial, healthcare, and government segments, as they often send large files and are subject to tight security and privacy regulations.
- CentraQ and CentraQ Pro enable businesses to control data and printing costs while enhancing worker productivity. Users can release print jobs from any compatible device on the network. The solutions also support QR code release functionality. The Pro edition of the solution also offers six detailed reports, including device usage, individual user usage, device ranking, and more.
- DMConnect and DMConnect Pro enhance the benefits of a document management system by transforming UTAX MFPs into on-ramps for routing documents into any folder in an organization's DMS, allowing us-

ers to store, retrieve, and share files quickly, easily, and securely. In testing it was easy for administrators to develop, deploy, and maintain workflows, and even easier for end-users to use the system for their capture routing needs.

- PinPoint Scan 3 allows for scanning from the MFP to a PC with added speed, functionality, and versatility. Users can scan to a series of preconfigured destinations after entering a PIN, and all data is encrypted to protect sensitive information. The application easily allows end-users to create their own PIN and personalized scan destinations. It also requires minimal involvement on the part of IT staff.
- Teaching Assistant enables automated creation, printing, and grading of multiple-choice exams using popular bubble-sheet forms right from supported MFPs, with no need for client PC or server software.
- Microsoft connector allows users to access documents from SharePoint on-Premise, Exchange on-Premise, and Office 365 directly from the MFP's control panel.

IMAGE QUALITY

8.0

	Print Mode	Copy Mode
Colour Photographic Images	Very Good	Good
Colour Business Graphics	Very Good	Very Good
Text	Excellent	Very Good
Line Art	Excellent	Very Good
Halftone Pattern	Excellent	Good
Halftone Range	Excellent	Very Good
Solids	Very Good	Very Good

PRINT QUALITY

8.5

- Bright saturation, with above average sharpness and background reproduction; above average consistency of KATUN solid colours
- While flesh tones were slightly reddish, colour photos exhibited above average smoothness

- Dark, sharp and fully formed text, with no signs of breakup under magnification
- Distinct fine lines, with consistent thickness, smooth circles and diagonal lines, with no evidence of breakup or stair-stepping
- Distinct separation between all greyscale levels and smooth dot-fill with minimal banding
- Dark solids, with minimal mottling visible

Print Density Range

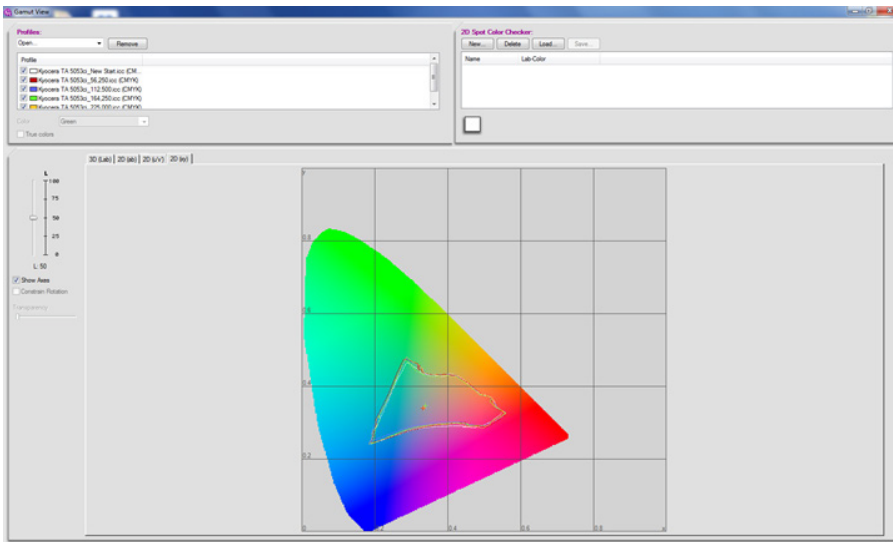
	Tested Device	Competitive Average
Black	1.37	1.47
Cyan	1.17	1.11
Magenta	1.11	1.19
Yellow	0.92	0.90

Density of a printed image with blocks of all solid colours, based on the average of two readings each for cyan, magenta and yellow, and four different locations on the output for black. The higher the reading, the darker the image.

Gamut Variance Readings

Test Point	DELTA E	DELTA E (2000)	RATING
56,250	3.65	2.65	Very Good
112,500	3.10	2.17	Very Good
164,250	4.35	3.21	Very Good
225,000	3.90	2.89	Very Good
Average Buyers Lab Rating			Very Good

The above chart/graph represents the change in the device's (overall) colour gamut, taken at four specific points during the evaluation. Each test point is compared to the starting point and the Delta E measurement represents how far the device's colour has changed over time. The higher the number/measurement, the more significant the change.



Visible Halftone Range

UTAX 5007ci	Halftone output was visible from the 10% to 100% dot-fill levels, with distinct separation between all levels.
The halftone range test original consists of 10 blocks of increasing dot-fill levels (10 to 100%, in 10% increments)..	



COPY QUALITY

7.0

- Bright saturation, with above average background reproduction; above average production of pastel shades
- Slightly reddish flesh tones for colour photos; above average colour halftone range
- Dark, fully formed characters, though curves were slightly jagged
- Distinct fine lines, with consistent line thickness, though an average amount of stair-stepping and toner overspray were evident
- Distinct separation between levels over the entire range of greyscale; halftone patterns were slightly grainy
- Dark solids, with minimal mottling

Copy Density

	Original	Tested Model	Competitive Average
Black	1.57	1.35	1.50
Cyan	1.52	1.08	1.27
Magenta	1.45	1.03	1.22
Yellow	1.03	0.87	1.64

Density of a printed image with blocks of all solid colours, based on the average of two readings each for black, cyan, magenta and yellow, corresponding to two different locations on the output. The higher the reading, the darker the image

Visible Halftone Range

UTAX 5007ci	Halftone output was visible from the 15% (which is the minimum coverage area on the original) to 100% dot-fill levels, with distinct transitions between all levels.
-------------	--

The halftone range test original consists of eight blocks of increasing dot-fill levels (15%, 29%, 53%, 77%, 83%, 91%, 95%, 100%).



USABILITY

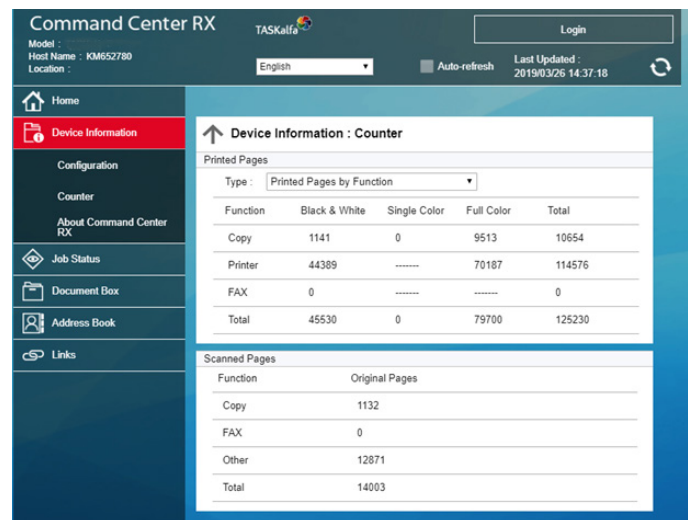
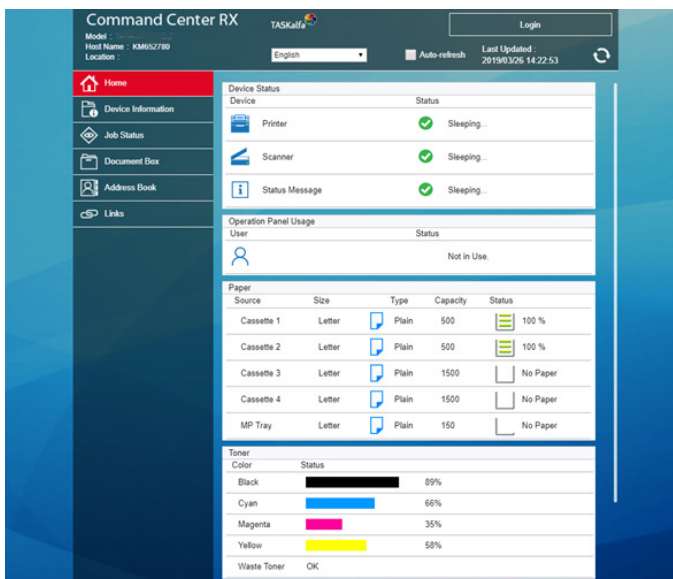
8.0


SERVICEABILITY/MANAGEMENT

7.5

- Drivers can be installed simultaneously with each other and the feedback utility, and no user intervention is required for the configuration of accessories.
- The install utility also has built-in test-page printing, but drivers cannot be pushed out to multiple PCs during install.
- Browsing when adding a network scan to folder is available from the control panel, as well as LDAP support for programming destinations remotely
- A web-based service streamlines remote fleet maintenance. The cloud-hosted solution enables administrators to view device status and easily identify and execute high-level maintenance tasks from anywhere, thus reducing service costs by circumventing on-site visits from technicians. It also includes a Remote Panel feature that allows administrators to remotely access the end users' operation panel to assist in navigation without a technician on site.
- The web user interface is logically organized and easy to use.

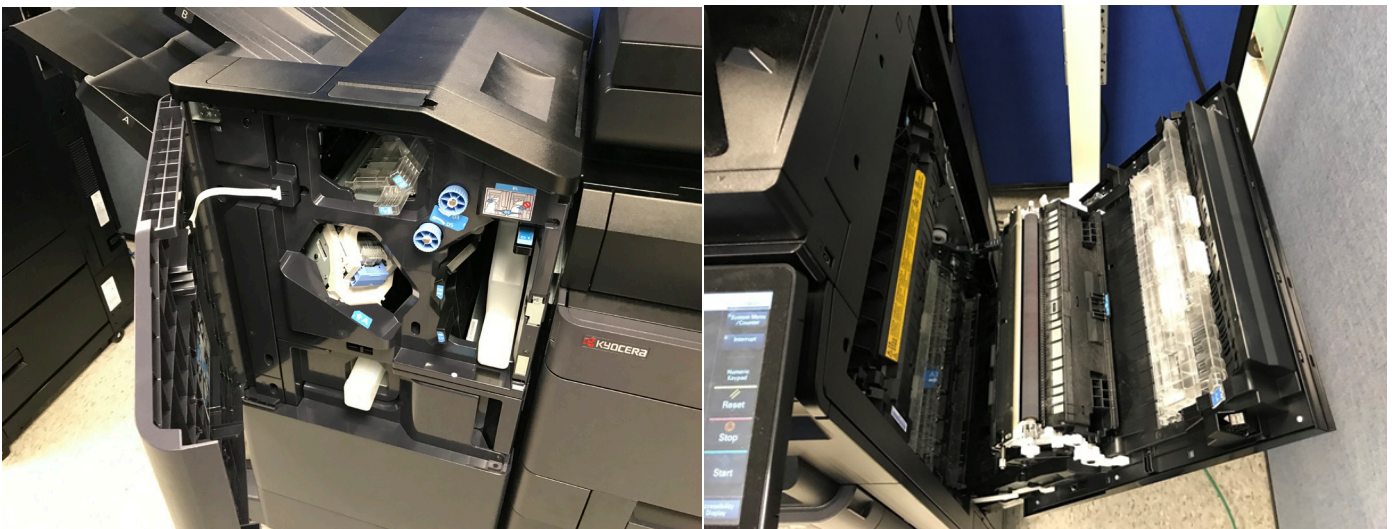
- Unlike with some competitors, a built-in search function to quickly find device settings and administrative tasks is not supported. Administrators also cannot create a shortcut when on a tab or settings page frequently used.
- UTAX Network Print MOnitor enables device discovery and management of UTAX hardware on the network. Administrators can sort devices by name or IP address and specify which information is shown on monitored devices. Network Print Monitor also allows administrators to create groups of products based on reporting or error notification requirements. Within a “report group” an administrator can receive reports via e-mail outlining a variety of device statistics, including printed page volumes and consumables levels, at defined time intervals. While the Network Print Monitor does not support remote access to the device’s service mode, it does provide access to the embedded web utility, where firmware can be upgraded from. Remote drive installation is not supported.
- The black toner bottle can be reused as a waste toner bottle. Simply remove the black toner bottle when it is empty, rotate the bottle and insert the bottle into the waste toner slot.



The main screen of the web user interface includes notifications and gauges on the status of the device including device state, and paper drawers and consumables in percent increments. Common job defaults can be set for print, scan, and copy. Administrators can also customize the Home screen and taskbar, as well as the scan and copy menus from the embedded web server. Print, scan, and copy usage can be restricted and tracked by user and group. Detailed job history lists are provided for print, scan, and copy jobs, but cannot be exported. Optional remote operation allows an administrator to operate the control panel from a PC and interact virtually across networks.

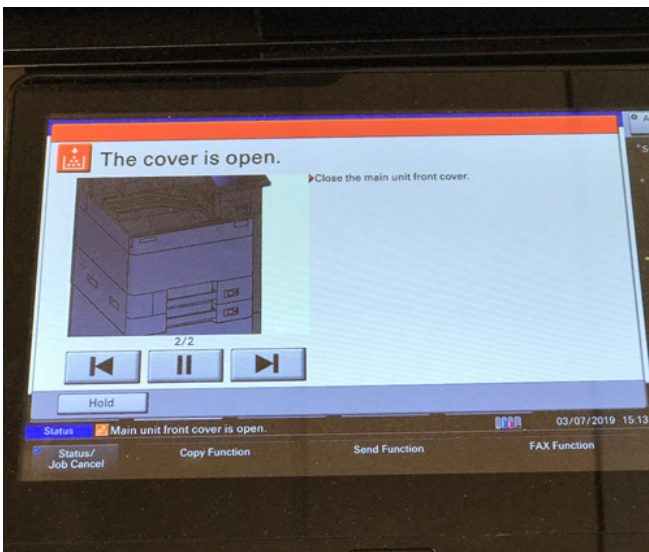


Both length and width guides slide in sync when adjusting paper size in the drawers and have blue locking tabs for easy view. The drawers also feature easy-to-see limit indicators for standard paper, envelopes, and small sizes. The soft close drawers make for no slamming of cassettes, and also pull out far enough for easy access in case of misfeed.





Misfeed areas are easily identified inside the machine with blue labels and numbers.



Users are also presented with an animated video that the users can let play or scroll through using the arrows at the control panel.



The process for replacing toner is simple and clean. Only when the container is empty will the device notify the user to open the front panel and make the replacement, helping to prevent premature replacement of toner. Guidance at the control panel is extensive and includes text, graphics, animation, and video.

Consumable Rated Yields

USER- REPLACEABLE	Competitive Average	Tested Model
Black Toner	29,935	30,000
Colour Toner	24,461	20,000
Black Photoconductor	203,181	600,000
Colour Photoconductor	168,909	600,000
Black Developer	510,000	600,000
Colour Developer	500,000	600,000

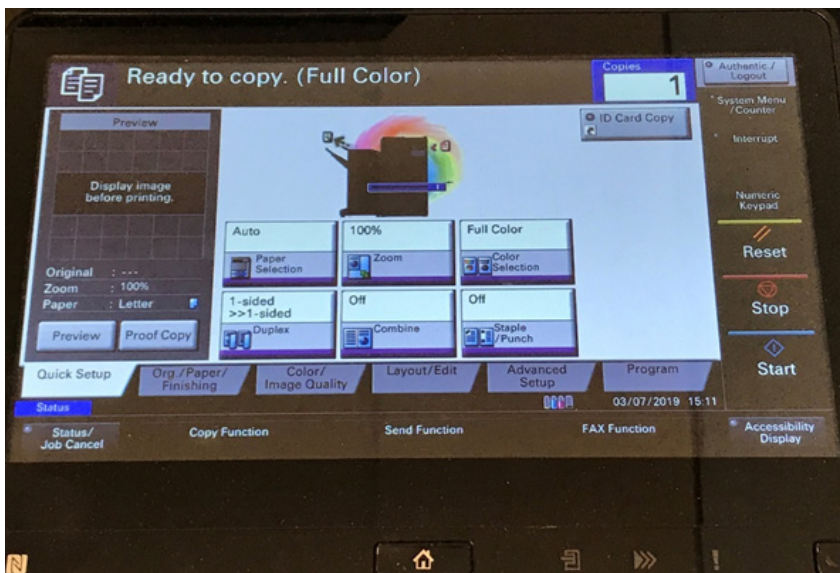


WALK-UP EXPERIENCE

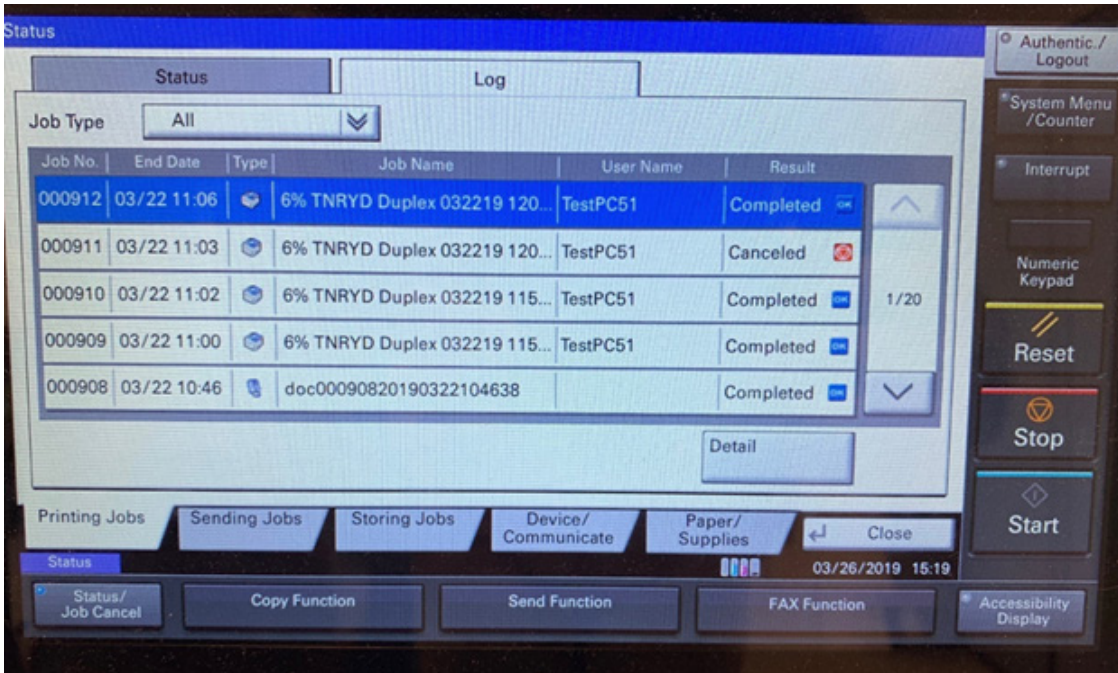
8.0

- The 257-mm control panel has been redesigned to be entirely touch outside of the Home hard key and is fully tiltable. The screen is also bright in default settings and is adjustable in one of five increments. However, slide/swipe navigation is not yet supported, and would further simplify the usability of the control panel.
- The Help button on the device tool bar is robust, listing three pages of explanations of basic operations, six pages of functions, and one page of trouble shooting skills. However, the information is not context sensitive for specific functions.
- The Home screen and taskbar can be customized on a user by user basis with authentication. Functions can be added and removed, and relocated, though the functions available are somewhat limited.
- The scan and copy menus can also be customized on a user by user basis.
- The system does not support simple scan or copy interfaces, but both screens can be enlarged for the visually impaired.
- Scan preview allows users to enlarge the view, navigate through pages, and move images around, but does not support page deletion or onscreen editing. There is also no support for slide/swipe navigation through pages.
- Blank page removal and colour drop-out mode are both supported.
- Up to four LDAP servers are supported and destination addresses entered manually at the control panel can be added to the device-resident address book on the fly by end-users. Multiple destination types can also be stored into a one-touch address book entry, but users must first set up a group entry.
- The USB port is located on the right side of the control panel, and would be more visible if placed on the front of the panel. The USB menu does auto-populate when a USB device is inserted into the port, whereas some other systems require users to navigate through several menus to locate USB capabilities. In addition to support for encrypted PDF, users can name files, store them into subfolders, and create folders from the device. Scan preview is not supported when scanning to USB.

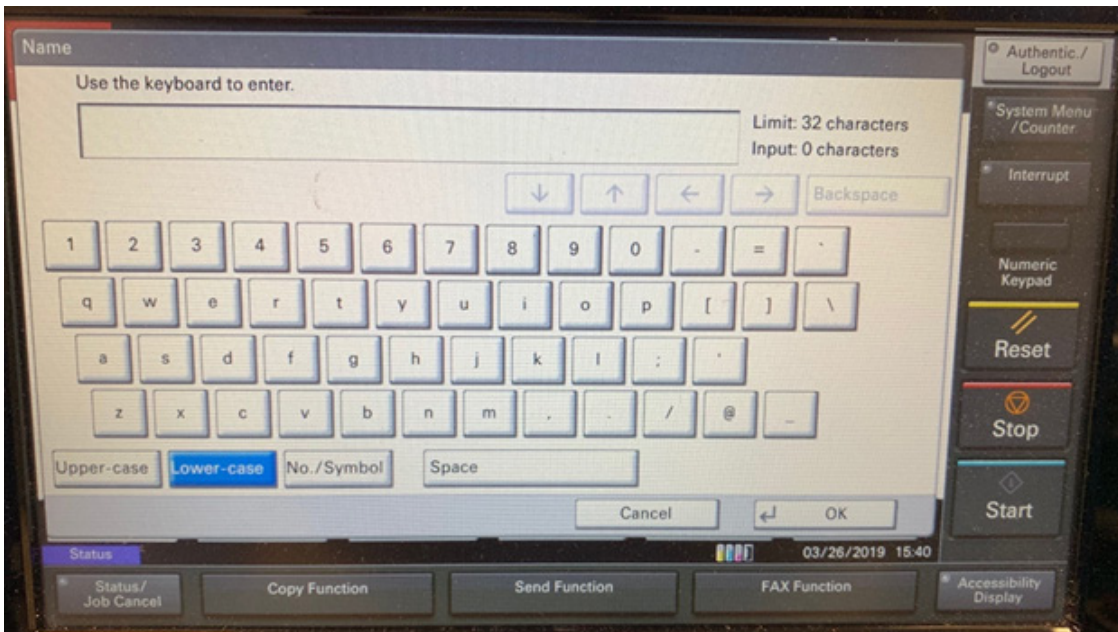
- Job build for scanning and copying is robust, with support for mix pages from the platen and document feeder, mixed-size original feeding, mixplex changes between batches, and image quality changes between batches. Users can change additional settings in between scanned pages, including duplex, resolution, bleed-thru, and skip blank pages. Staple can only be selected when starting the job build once the first image is scanned, users cannot go back and have the job stapled.



Navigating the control panel interface is simple and intuitive overall. Most commonly used scan and copy functions are selectable from each menu's first screen, helping to maximize efficiency. In addition, users can easily navigate to the scan or copy menus without having to return to the Home screen. The scan and copy menus can also be customized on a user by user basis by adding up to six shortcuts for functions that can be found under the System Menu button on the Home screen taskbar. In addition, up to 50 job programs can be saved within the scan or copy menus, or even on the Home screen, to streamline workflow of commonly run jobs.



Users can view all print, scan, and copy jobs in a single list, or they can choose to view only specific types of jobs. The number of originals and numbers of sets in a job are listed, as are jobs that are complete and incomplete. The queue displays the total number of sets in a job, but not the time until job completion. Jobs can be promoted to the top or one slot at a time for maximum flexibility. However, jobs cannot be modified beyond quantity.



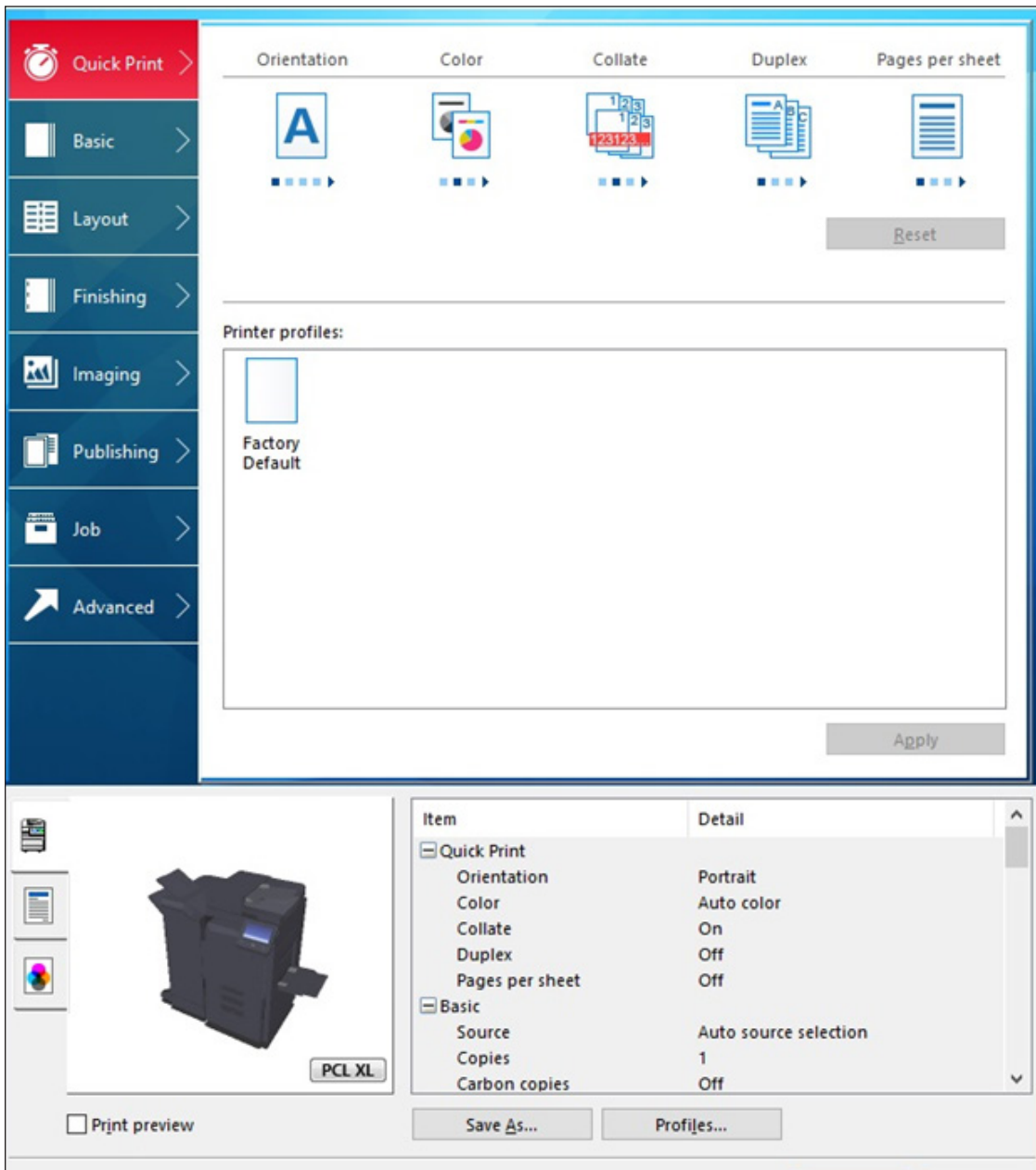
The electronic QWERTY keypad appears when a search key is selected, or when entering an email destination from the scan screen. The keypad is large, and the keys are comfortably spaced. Dedicated "@" and "." Keys are provided on the main screen, but the ability to store extensions (.com, .net) is not supported, nor are typical domains (@gmail.com, @yahoo.com). A subject and three body templates can be stored. A hard keyboard is available as an option.



WORKSTATION EXPERIENCE

8.5

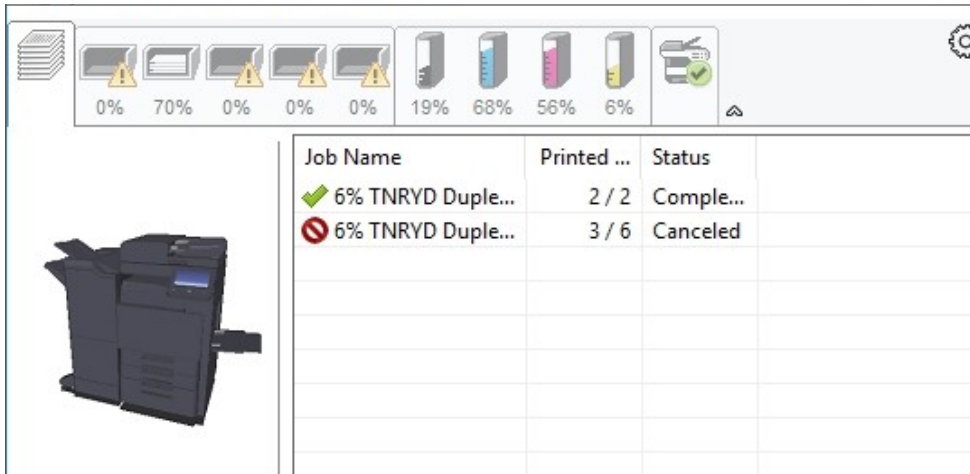
- Streamline complex workflows via the Quick Print tab.
- Easily switch between PCL and PostScript drivers for different job types, whereas competitors typically require users to have to go through printer properties in order to switch between drivers.
- Direct print capabilities are robust and include support for PDF, JPEG, TIFF, DOC, XLS, and PPT formats, as well as the ability to output multiple jobs and sets, change quantity, change simplex/duplex, select paper size and source, apply corner stapling, and create profiles.
- Secure print procedures are intuitive, and username and filename can be changed via the Custom Name function; however, any user can delete a secure print job.
- Highly detailed consumables status and highly customizable email alerts are supported from the embedded web server for conditions including add paper, add toner, cover open, paper jam, low toner, almost full waste toner box, and all other errors.
- The driver includes Eco Print (reduces the amount of toner used) and Print Preview (provides on-screen preview of every page of the job, along with the ability to zoom in and cancel the job). However, no changes can be made to the document from the preview function.
- Any driver settings that are not compatible are greyed out and not selectable, whereas some competitors allow users to scroll over the greyed out settings with their mouse and receive a pop up on how to get the setting to work.
- The Batch Copies feature separates copies of a print job into different batches by enabling the user to select the number of copies in each batch. Users can name each batch printing job and save its settings for future use. A storage device must be installed or RAM disk enabled in order for this feature to be used.
- An optional EFI Fiery print controller is available for more graphics-intensive environments; the EFI Fiery controller features a 2.9-GHz processor and a 500-GB SATA hard drive. Capabilities include standard spot colours, and optional Fiery Hot Folders, Fiery Impose, and Fiery Compose.



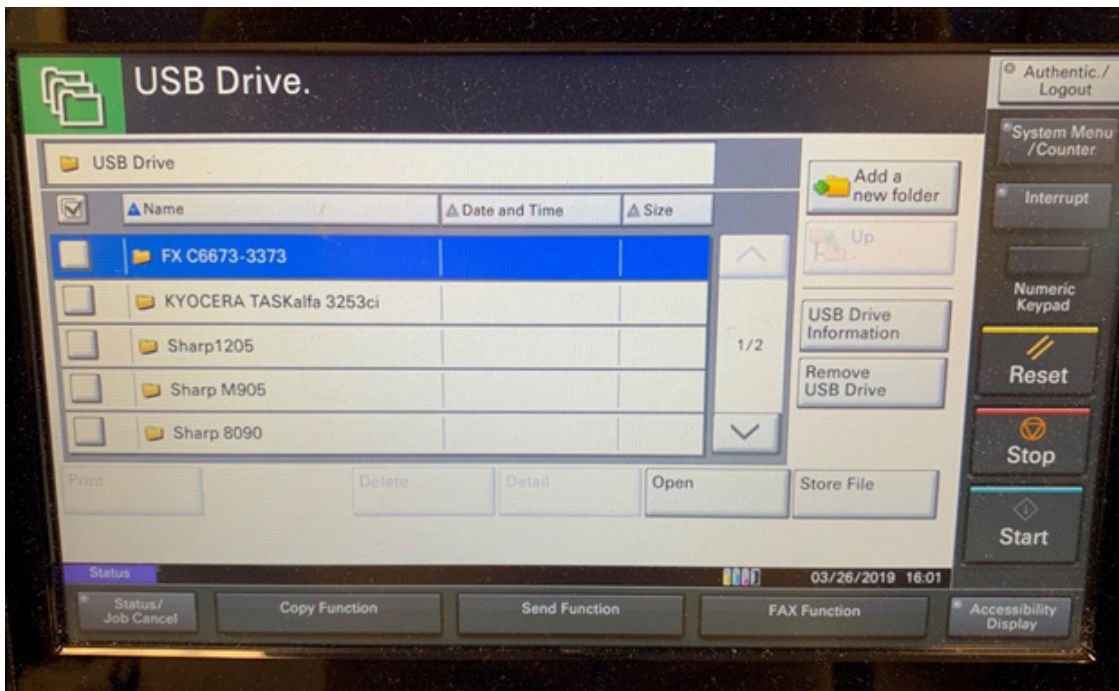
While an entire tab of the driver cannot be customized, users can save custom profiles that are stored as graphical icons via the Quick Print tab to allow programming of complex jobs in one click. Users can click on the Save As button on any of the tabs to save currently selected settings, name the new profile, and add a description for storage on the Quick Print tab.

Item	Detail
Quick Print	
Orientation	Portrait
Color	Auto color
Collate	On
Duplex	Off
Pages per sheet	Off
Basic	
Source	Auto source selection
Copies	1
Carbon copies	Off

Most typical print job settings are selectable from the Basic tab, including paper type and source, duplex, EcoPrint On/Off, quantity, and collate sets, although finishing selections such as stapling are programmable from the Finishing tab.



When the user sends a print job a pop up box appears showing all the paper trays and amounts of paper available in each drawer in percent increments, toner remaining in percent increments, and jobs in the print queue. Print job completion and deletion are supported. However, if the user closes out the pop up box during the print process, print job completion and/or deletion will not reappear.



The print from USB menu is automatically populated, with support for PDF, JPEG, and TIFF formats. Users can also change settings for quantity, simplex/duplex, colour/mono, and paper size and source. Users can also navigate and print from sub-folders. However, file preview did not function.

MOBILITY

Not Rated

The device provides standard WiFi-Direct and NFC support for Android mobile devices. The optional IB-51 for wireless LAN interface extends communication distance to 328.1 feet. Mobile printing is also supported via Apple AirPrint, Google Cloud Print, and Mobile Print.

SECURITY

9.0

- Standard secure print, encrypted secure print, encrypted scanning, and encrypted USB scanning
- Standard hard drive overwrite and encryption
- Optional ID card authentication
- Administrators can limit or restrict access to colour printing, the control panel, and the USB port
- No support for digital signature
- No support for MAC filtering

SPECIFICATIONS

8.0

- Higher-than-average memory allows for faster processing of data
- Heavy paper weight support increases media flexibility
- Above average maximum paper capacity means less time spent having to refill paper
- Optional 270-sheet duplex single pass feeder supports multi-feed detection to minimize risk of misfeeds and scans at 120 ipm
- Paper handling options include a dual 500-sheet paper drawer, a dual 1,500-sheet paper drawer, and a 3,000-sheet side large capacity tray (A4)
- Optional 4,000-sheet finisher allows for more complex jobs and can be configured with an optional hole punch unit, optional 7-bin mailbox (100 sheets per bin), and optional booklet/tri-fold unit; 500-sheet internal finisher and 1,000-sheet finisher also supported
- Below average hard drive capacity

SPEED

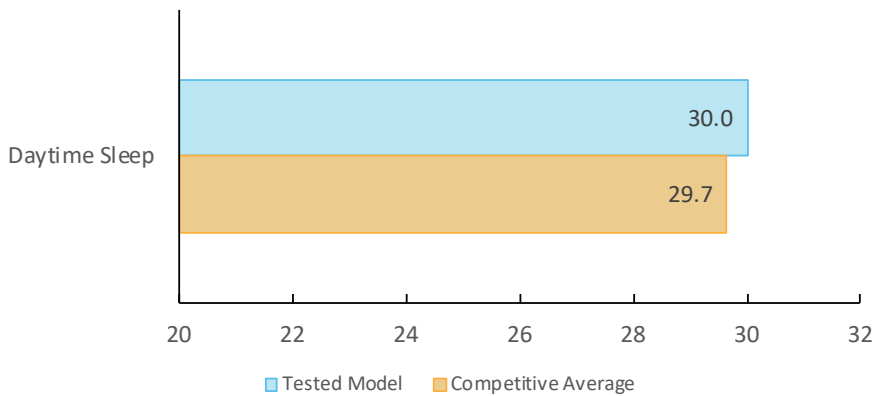
6.5

PRINT SPEED

6.5

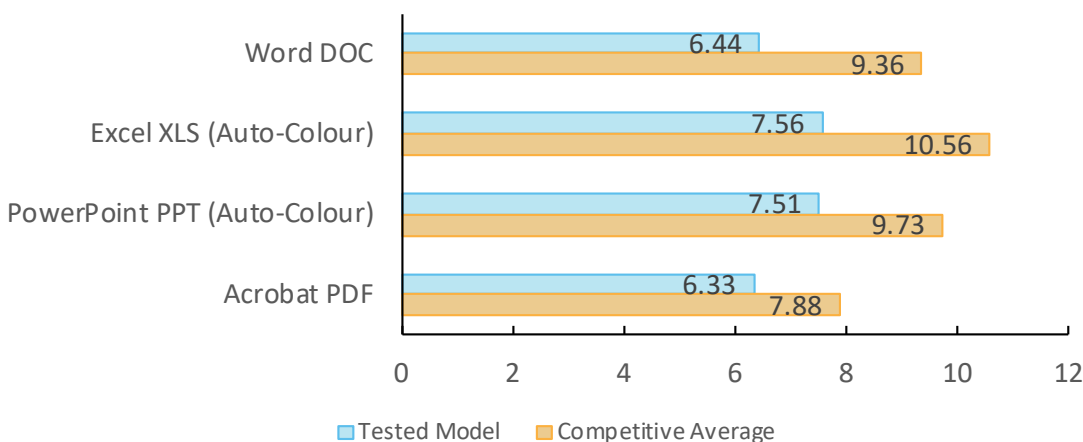
First-print times were fast compared to the average when printing Word file formats. Long-run duplex job speeds in colour and black were also faster than the competition. The device's output speed in black job stream testing was faster than average, meaning the device can expediently handle various types of workflows throughout the day. But in colour, both short- and long-run jobs ran slower than average.

Recovery Times (in Seconds)



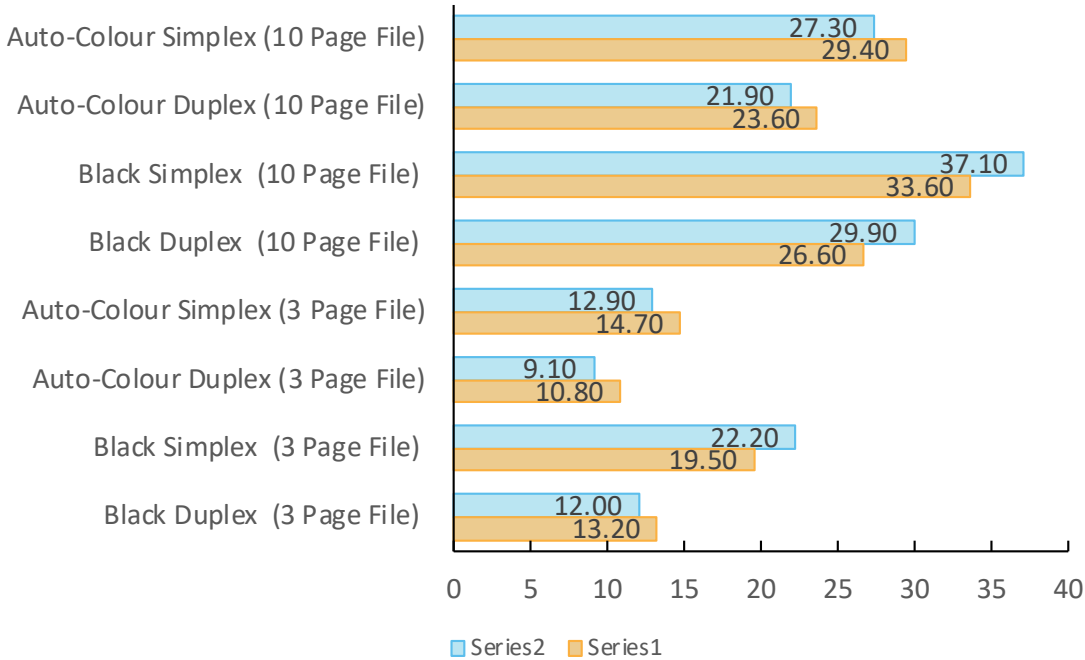
Recovery time in seconds indicates the time it took to warm up, process the image and deliver a single-page test document to the output tray. The unit was tested with the PCL driver.

First-Page Print Time From Ready Mode by File Type (in Seconds)



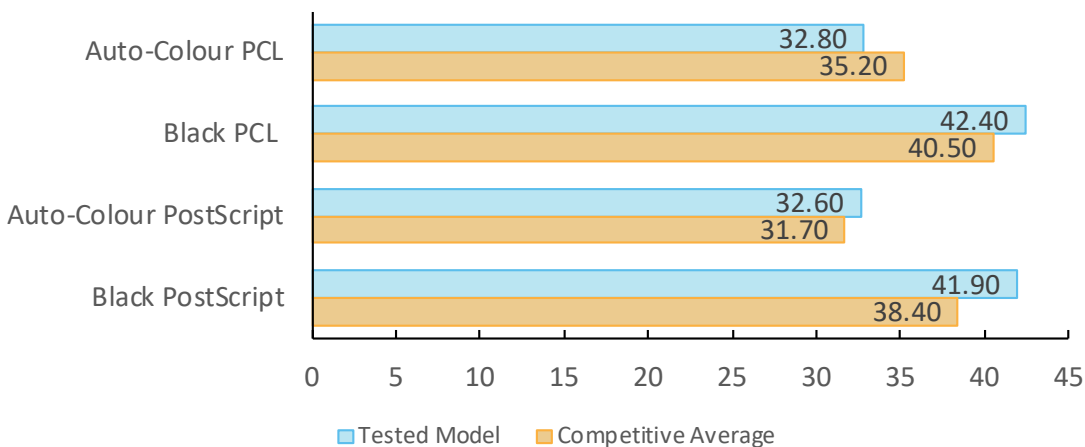
First-print time indicates the time it took to process the image and deliver a single-page test document to the output tray. The unit was tested using the PCL driver.

First-Set Print Speed (Single Set; in PPM)



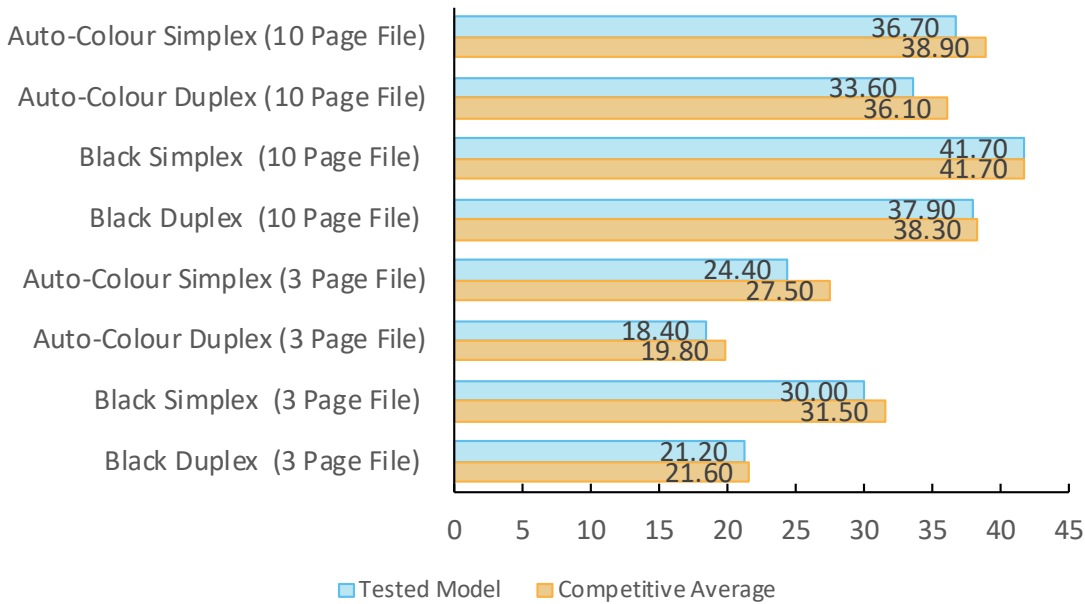
Single-set speed is tested using Buyers Lab's proprietary 3-page and 10-page testing documents. The unit was tested using the PCL driver.

Job Stream Test



Buyers Lab's job stream includes Word documents, Outlook email messages, Excel spreadsheets, PowerPoint, HTML and Acrobat PDF files, totalling 19 pages. This test simulates the type of traffic a typical device might experience in a real-world, multi-user environment. All of the files are sent to the device as a group, at which time the stopwatch begins; timing ends when the last page of the last file exits the device.

Average Print Speed (Multi-Set; in PPM)



Speed is tested using Buyers Lab's proprietary 3-page and 10-page testing documents. Buyers Lab obtains the overall speed by averaging the tested speed for each run length (1, 5 and 10 sets). The unit was tested using the PCL driver.

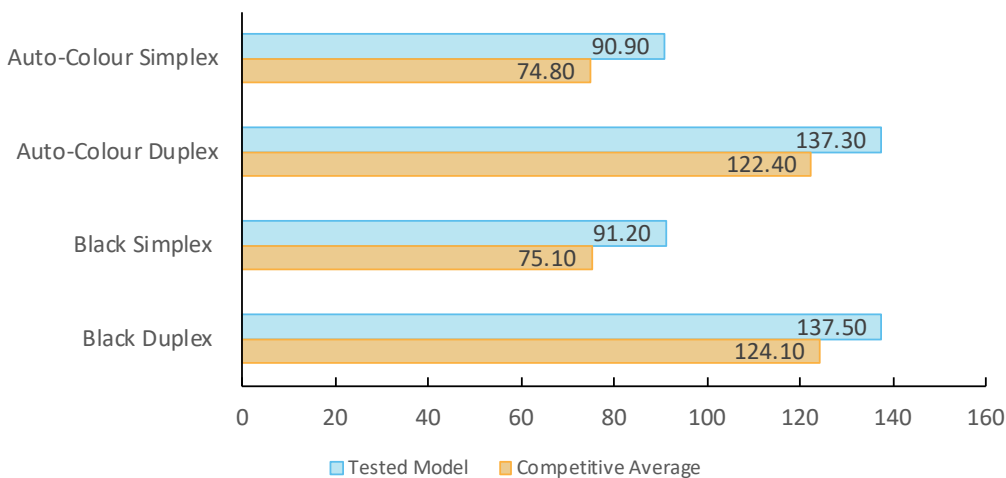
Tests were conducted using U.S. letter-size paper; A4 results may vary slightly.

SCAN SPEED

8.5

Scan speeds were the fastest or among the fastest tested to date among its peers. Colour file size was smaller than average when compressed. No compression exists in black-and-white mode, but scan file size is relatively competitive to other non-compressed files.

Scan Speed (in IPM)



Testing is conducted with a 10-page file scanned in default mode at 300 dpi in PDF format.

Tests were conducted using U.S. letter-size paper; A4 results may vary slightly.

Scan File Size (in KB)

	Tested Model	Competitive Average
Auto-Colour (Default Compression)	565.0	761.0
Auto-Colour (Best Compression)	141.0	148.0
Black (Default Compression)	124.0	21.0.0
Black (Best Compression)	NA	69.0

Testing is conducted with single-page files scanned at 300 dpi in PDF format.

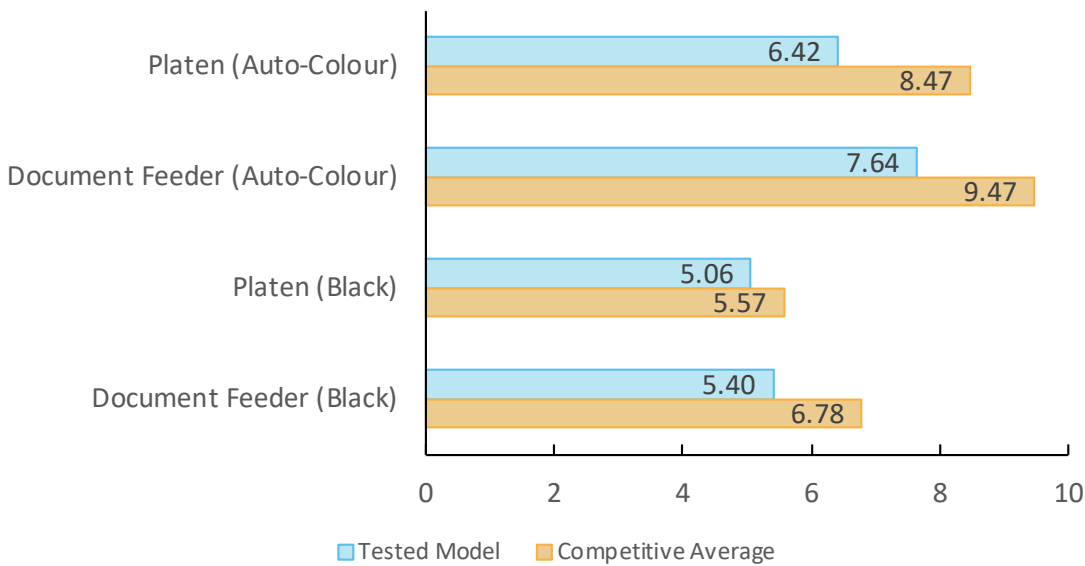


COPY SPEED

6.0

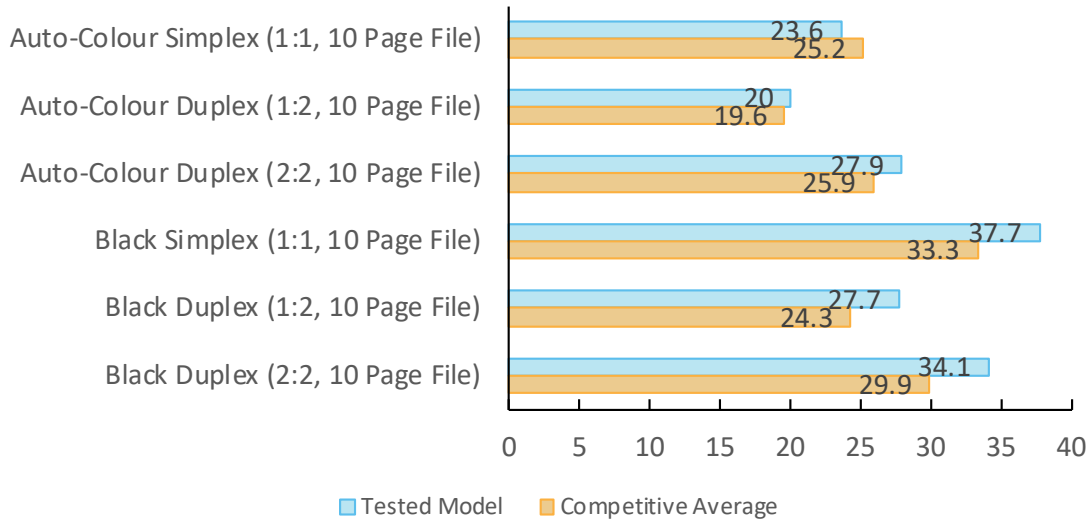
First-copy times were the fastest or among the fastest of its group. Short-run jobs in black were also faster than average. Outside of that, the system’s copy speeds were largely competitive with its peers.

First-Copy Times (in Seconds)



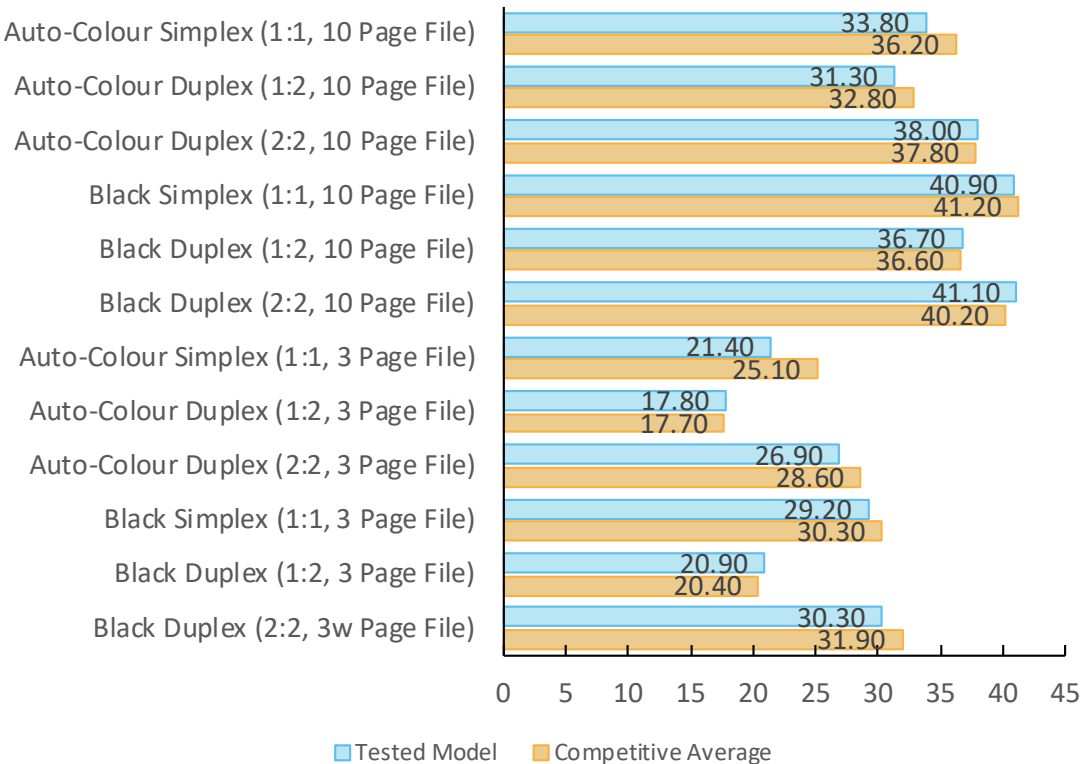
First-copy time is measured as the time it takes for a single copy to completely exit the device when a copy is made from an original placed in the document feeder and on the platen.

Single-Set Copy Speed (in CPM)



Single-set copy speed is tested using 3-page and 10-page mixed-colour and black documents. Timing begins as the start button is pressed, pages are scanned through the document feeder and timing ends when the last page of a single-set of the document exits the device.

Average Copy Speed (in CPM)



Copy speed is tested using 3-page and 10-page mixed-colour and black documents. Buyers Lab obtains the overall speed by averaging the tested speed for each run length (1, 5 and 10 sets).

Tests were conducted using U.S. letter-size paper; A4 results may vary slightly.



POWER CONSUMPTION

Not Rated

Projected Annual Energy Consumption (in kWh)

Total Annual Energy Consumed	121.9336
Competitive Average	145.2714
Pages Printed	174 total – 6 jobs of 29 pages each
Test Documents Used	DOC, XLS, PPT, HTML, PDF, Outlook e-mail messages
Output Modes	50% simplex, 50% duplex

Calculations based on printing Buyers Lab's job stream test suite over a four-hour period, with the machine set to go into its energy-save and/or sleep modes at the shortest intervals possible. Total yearly energy consumption is calculated based on the total energy used during a typical workday, plus overnight and weekend sleep energy. Total number of pages run is based on a Buyers Lab survey of average monthly volumes by speed range.

Environmental Features

Specified capable of running recycled paper (30%/50%/100% post-consumer content)	Yes
Instant/Quick Fusing	Yes
Duplexing	Yes
Toner-save mode	Yes
RoHS compliant	Yes
Toner cartridge recycling program for this product	Yes
Ability to program features such as duplexing and auto shut-off over entire fleet	Yes
What tool can be used to do this?	INA
Eco-Label Certifications	
ENERGY STAR	Yes
Other	ECMA-370/The Eco; EPEAT level pending

INA: The vendor declined to provide this information
 NA: Not applicable

SUPPORTING TEST DATA

Test Environment: This product was tested in Buyers Lab's environmentally controlled US test lab, which replicates typical office conditions.

Test Equipment: : Buyers Lab's dedicated test network, consisting of Windows 2008 and Microsoft Exchange servers, Windows 7 workstations, 10/100/1000BaseTX network switches and CAT6 cabling.

Test Duration: A single product is tested for two months, five weeks of which consists of a durability test during which the product is run at its manufacturer-rated maximum monthly duty cycle, with 25 percent of the test volume comprised of copy jobs and 75 percent comprised of print jobs. Buyers Lab's daily test usage is designed to replicate real-world use over an eight-hour workday, and as such includes a mix of various-size documents, simplex and duplex modes, and a mix of short, moderate and long run lengths, and on/off cycles, throughout the day. The durability evaluation also includes testing of the document feeder/scanner in simplex and duplex modes for an additional 10 percent of the monthly maximum volume, evenly divided over the course of the test.

Tested Configuration: UTAX 5007ci base unit, plus Finisher DF-7110, Document Feeder DP-7130, and PF-7110 paper feeder.

Test Procedures: Buyers Lab's lab testing includes both Buyers Lab proprietary and industry-standard test procedures and documents. In addition to a visual image quality evaluation, optical density of primary colour (CMYK) solid fill output is measured using a densitometer, and colour gamut and consistency are evaluated using a colour spectrophotometer. The reliability test is conducted using Georgia Pacific and Boise paper in the US, and UPM, Data Copy and Mondi paper in the UK. In both labs, 30 percent of the paper is recycled. The media used for image quality testing is Georgia Pacific Printing Paper (24 lb., 96 brightness) in the US and UPM Future ImageTech 100gsm in the UK.

Competitive Group: Buyers Lab's lab testing includes both Buyers Lab proprietary and industry-standard test procedures and documents. In addition to a visual image quality evaluation, optical density of primary colour (CMYK) solid fill output is measured using a densitometer, and colour gamut and consistency are evaluated using a colour spectrophotometer. The reliability test is conducted using Georgia Pacific and Boise paper in the US, and UPM, Data Copy and Mondi paper in the UK. In both labs, 30 percent of the paper is recycled. The media used for image quality testing is Georgia Pacific Printing Paper (24 lb., 96 brightness) in the US and UPM Future ImageTech 100gsm in the UK.

Note: This report is based on Buyers Lab testing one representative test sample at a specific point in time. Buyers Lab is not responsible for differences in performance that may be the result of lot-to-lot variation, changes in production and machine modifications implemented by the manufacturer, service issues or any other reason beyond Buyers Lab's control. Test unit serial #: KM65092B.

About Keypoint Intelligence - Buyers Lab: Buyers Lab (BLI) is the world's leading independent provider of analytical information and testing services to the document management industry. For over 50 years, buyers have relied on Buyers Lab to help them differentiate products' strengths and weaknesses and make the best purchasing decisions, while industry sales, marketing and product professionals have turned to Buyers Lab for insightful competitive intelligence and valued guidance on product development, competitive positioning and sales channel and marketing support. Buyers Lab also offers private, for-hire testing services that help manufacturers develop and market better products and consumables.

Keypoint Intelligence - Buyers Lab • North America • Europe • Asia

Gerry Stoia, CEO

Deanna Flanick, CRO

Patrick Albus, CFO

Randy Dazo

Group Director, Office Technology & Services
Randy.Dazo@keypointintelligence.com

Jamie Bsales

Director, Solutions Analysis
Jamie.Bsales@keypointintelligence.com

George Mikolay

Associate Director, Copiers/Production
George.Mikolay@keypointintelligence.com

Marlene Orr

Director, Printer & MFP Analysis
Marlene.Orr@keypointintelligence.com

Carl Schell

Managing Editor
Carl.Schell@keypointintelligence.com

U.S. ANALYSTS



Kris Alvarez

Editor
Kris.Alvarez@keypointintelligence.com

Lee Davis

Editor, Scanner/Software Evaluation
Lee.Davis@keypointintelligence.com

Kaitlin Shaw

Editor, Printer & MFP Evaluation
Kaitlin.Shaw@keypointintelligence.com

EUROPEAN ANALYSTS 

Priya Gohil

Senior Editor
Priya.Gohil@keypointintelligence.com

Samantha Phillips

Editor
Samantha.Phillips@keypointintelligence.com

Simon Plumtree

Senior Editor
Simon.Plumtree@keypointintelligence.com

Andrew Unsworth

Editor, Software Evaluation
Andrew.Unsworth@keypointintelligence.com

LABORATORY 

Pete Emory

Director, U.S./Asia Research & Lab Services

David Sweetnam

Director, EMEA/Asia Research & Lab Services

COMMERCIAL

Mike Fergus

Vice President of Marketing & Product Development

Gerry O'Rourke

International Commercial Director

CERTIFICATE OF RELIABILITY

Awarded to the

UTAX 5007ci



A handwritten signature in black ink, appearing to read "Gerry Stoia".

GERRY STOIA, CEO

APRIL 2019

DATE

This is to certify that when subjected to a 225,000-impression and 22,500-scan Buyers Lab durability test, the UTAX 5007ci proved to be a highly reliable product.

BUYERS LAB

THE LEADING INDEPENDENT OFFICE PRODUCTS TEST LAB AND BUSINESS CONSUMER ADVOCATE
NORTH AMERICA • EUROPE • ASIA • KEYPOINTINTELLIGENCE.COM

©2019 Keypoint Intelligence. Duplication without permission is prohibited.